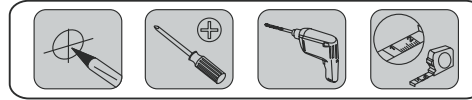
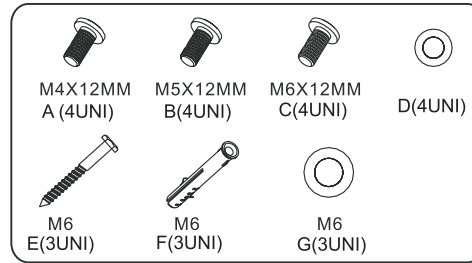
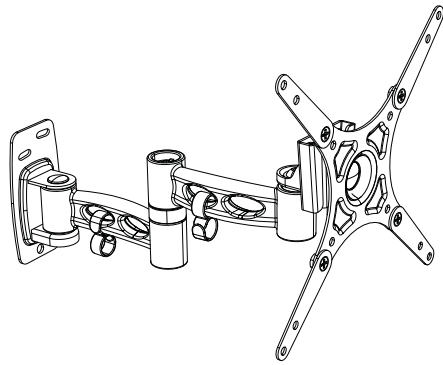


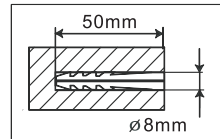
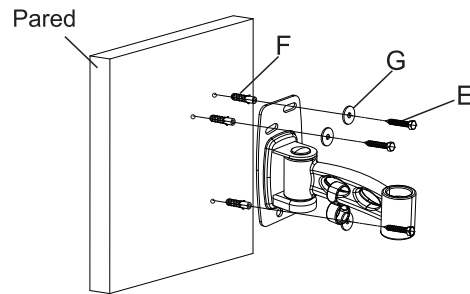
SLCD 492

MANUAL PARA EL USUARIO

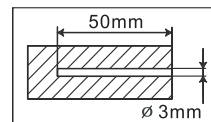
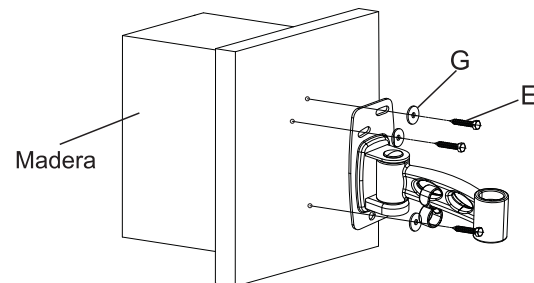
VESA: 75 x 75/ 100 x 100/ 200 x 200
 Para LCD/ LED/ PLASMA de 15" a 42"



PASO 1A Montaje sobre pared de concreto

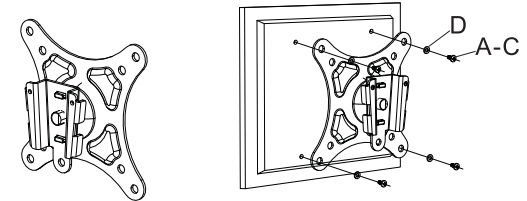


PASO 1B Montaje sobre madera

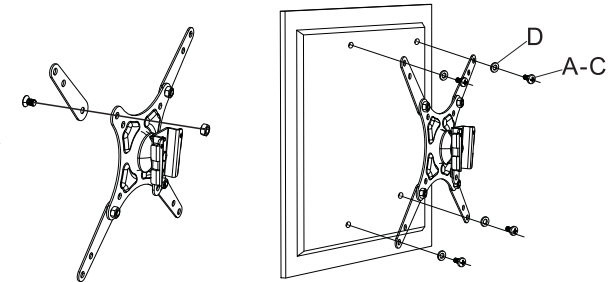


PASO 2 Ajuste las abrazaderas a la pantalla

10"-27" TV →



13"-37" TV →



PASO 3 Encastre la TV en el soporte de pared

