



## *Digital Video Recorder*

# *Fast Operation Guide*

### ★ Main Functions

- Support SMTP and Email linkage.
- Support output HDMI and VGA at the same time.
- Support ahd analog video and ordinary analog video input.
- Support fast CD/DVD burner.
- Support preview channel order adjustable, irregular split screen and sequence.
- Support the resolution input source adaptive dynamic allocation function and frame rate.
- Support clipping backup while playback.
- Support video lock/unlock/delete.
- Support HDD Group, each channel can be assigned with their own storage HDD.
- Support 4 types recording: Manual, Schedule, Motion, Alarm; Motion detection continuous alarm.
- Support pre-record and record duration.
- Support video in query and playback, playback with player. (can be hidden)
- Support 4 mask area setting, support 4 special interested area simultaneously.
- Support DDNS, 3G or PPPOE and auto connect function.
- Support cloud service.
- Support network diagnosis.
- Support IP Server and Initiative to connect platform.
- Support UPNP (the global network) and FTP uploading videos.
- Remote set para., update, preview, VOC and backup the DVR recording file.
- Support Web Server function.



# HD-AHD DVR

## Appendix DVR specification

Function	Model	DVR5116
Product attributes		DVR5116-BH
Video format		720p/960H/FD1
Video input		16 channels
Video output		HDMI/VGA
Audio input		2 channels
Audio output		1 channel
Voice chat		Support (Multiplexing with audio input)
HDD port		SATAx1
Alarm input		4 channels
Alarm output		1 channel
Multi-playback		16 channels
DVD Burner (USB external CD writer)		Support
RS-485 (half-duplex)		Support
RS232		Not Support
eSATA		Not Support

The AHD series DVR could auto distinguish video source format and switch into matching format (720P or 960H), this function will works in each group ( CH01 and CH02 will be one group , CH03 and CH04 will the other group ,and so on) . Two channels in one group must have the same video source format , or will cause one of them could not work. Format switching depends on the first channel of each group .If the first channel has no video input , then the second channel will automatic distinguish video format.



# HD-AHD DVR

## cautions

- Don't touch the power switch or the DVR by wet hands.
- Make sure the machine and its case are grounded (There is an earth interface on the back panel of the machine).
- Keep the power supplier stable to avoid abnormal power cut off.
- Avoid dropping liquid or metal into machine that may cause short circuit or fire.
- Don't record or playback until at least one HDD is installed.
- Short circuit would happen when moist dust is on the board, so user has to temporarily brush the board and other accessories to make the machine work in good condition.
- Video/audio/RS485 devices cannot be plugged or drawn when the power is on, or else the equipment will be easily damaged.
- Use the power on/off button on the front panel instead of directly cutting off the power directly when turning off the DVR, so that the hard disk won't be damaged.
- DVR can scan the entered HDD automatically, if the HDD is the new one that is not formatted by DVR, the system will prompt users to format. (system can support formatting, it will not depend on PC).
- Warning: Don't try to plug in HDD to PC if not specialized persons, the following operation of HDD on PC will cause HDD can't be recognized and need format when plugged in at next time:
  - 1, modify or edit the file name.
  - 2, open the file and edit the content.
  - 3, copy back the data which copied out before to HDD again.
  - 4, Some third party browser software will also change HDD physical storage location in the background.
- In order to keep the integrity of the records, damaged disks should be exchanged promptly. (There is information about the error of the disk in the logbook.)
- When connected to the network or HDMI, please use network cable or HDMI cable with magnetic ring.
- Because of the updating, the pictures may not be as same as the material object.

## 1. Package Checking

After opening the box, please check the host computer whether it is distorted or mangled. If there have, please do not use it and contact your suppliers in time. Meanwhile, please check all accessories of the host computer; do read the attached information carefully. (Notes: Accessories as for the packing list)

## 2. Steps of hard disk installation



Step 1: Put HDD in the case (as pic. shown), SATA port face to inward and put case (with HDD) bottom up.



Step 2: Aiming the screw hole in HDD bottom and positioning hole in case bottom, use 3 screws to fix.



Step 3: Connect HDD power cable and data cable, please note that the directivity of cable.





# HD-AHD DVR



Notes: please purchase HDD from formal channel to get the quality assurance. This series DVR don't support the HDD hot swap, please connect the HDD before you turn on DVR. User should format the HDD before you use the record function. During long-distance transportation, please detach the HDD to avoid damaging it.

## 3. The front panel schematic diagram



SN	Function area	Function instruction
1	Power button	Used for device booting and shutting down
2	Status guiding light	Including power guiding light, record guiding light and alarm guiding light in chief
3	Function area	Operate common use functions, such as menu, playback, picture swift, focal distance, lock, clearing, return etc
4	Controlling function	Control up, down, left, right and speed forward, speed backward, frame forward of playback

## 4. The back panel instructions of DVR



## 5. Power on/off and login/lock


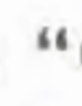
Power on: When connecting the power cable (with electricity), the machine will run directly. It's not necessary to press "Power" button to startup.


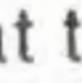
Power off: When the system is under the running state and logged in, click power button on the remote controller to popup the shut down interface. After clicked the "confirm" button, the system will enter the standby state.

Login/Lock : To avoid unauthorized user using the machine and influence the normal work of the system, we specially setting the keystroke lock and unlock function for the machine.



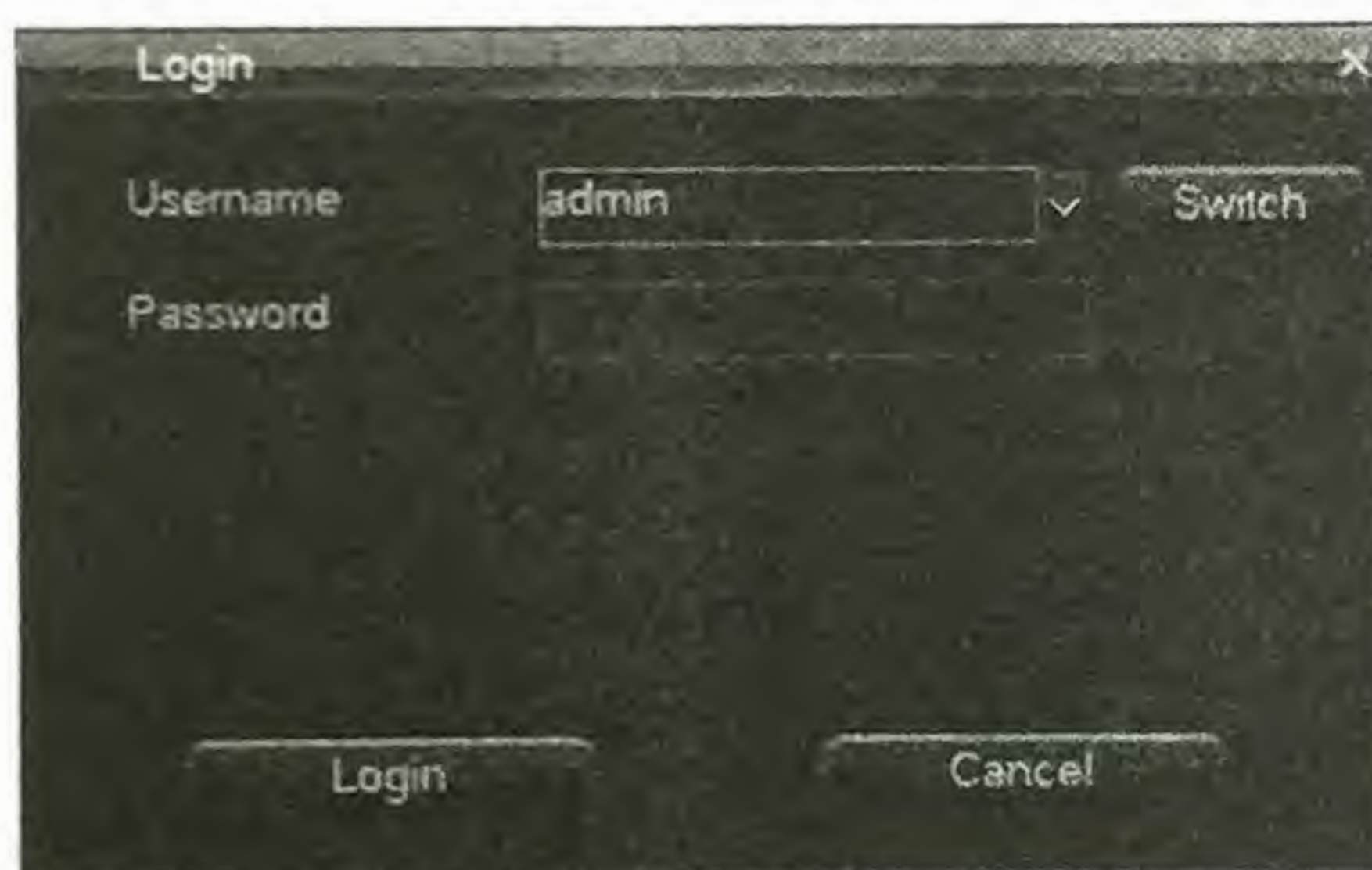
# HD-AHD DVR

When the system is in the status of locking “”, Press the “” button on the remote controller for about 1 second, the fig of login will appear as follows :

Input user name and password on the login port(distribute in authority in advance),after you input correct user name and password and press “login” ,the sign “” on the lower left corner will switch to “”, automatically,and show the user name of current user.Then you can carry on the operations in the authority to the system at the moment.

- 1、 Default User : admin, Default password : 888888 ;
- 2、 When you in put the incorrect password 3 times continuously, the system will alarm and get into the status of locking automatically.Inthatcase,you need toclick the “clear” on the remote controller to retype the password ;
- 3、 To input name and password,you can left click mouse.It will pop out software keyboard. Right click mouse to quit.

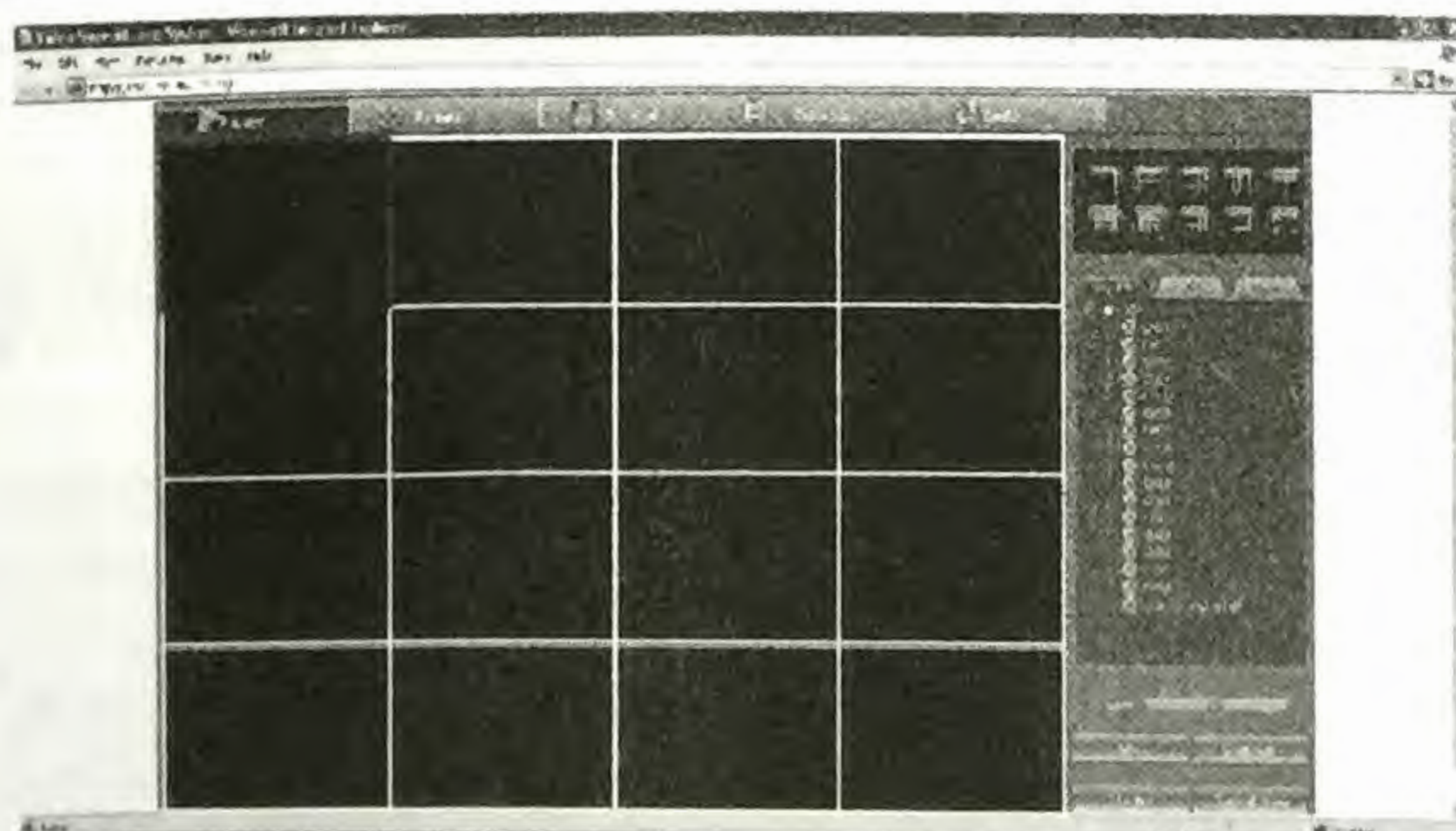
Note : For the sake of safety, please change the default password immediately.



## 6.WEB instructions

The preview method in WAN is same with in LAN. LAN Configuration for IE Browse:

- 【 1 】 ."Ping" the host IP first to confirm if the DVR is connected.
- 【 2 】 .Input the address of the host to access the equipment in the IE browser <http://device host IP: 81>,and then enter to connect,after a successful connection click "download activeX" to download,and running it.The default of IE access port is 81,the standard IE address is <http://host IP:port> when change to other port.
- 【 3 】 .Refresh the browser,enter your user name and password to login in the login box. If login is successful,the interface will pop up as follows.





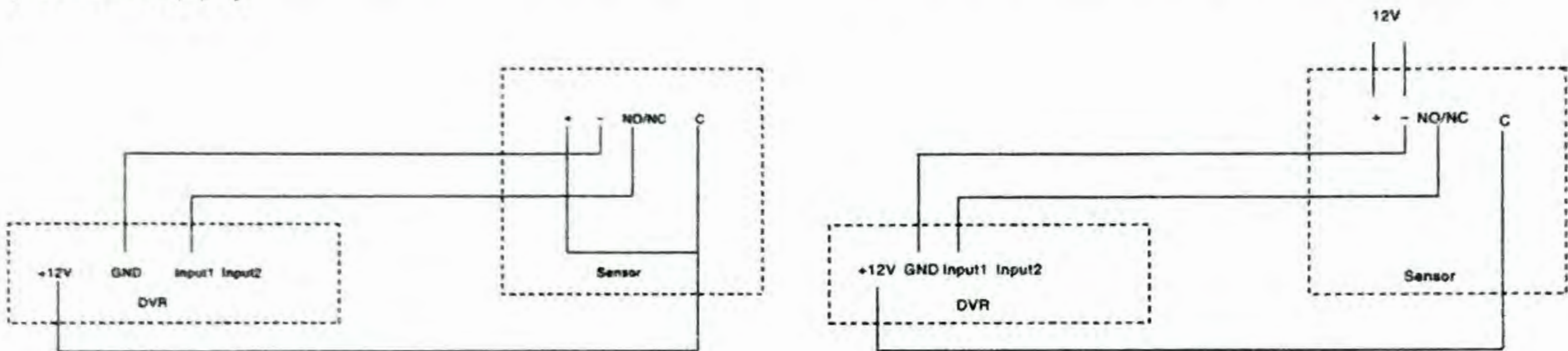
## 7. Alarm input/output connection

Sensor power: The machine provides a +12V DC power output port.

Alarm sensor connection:

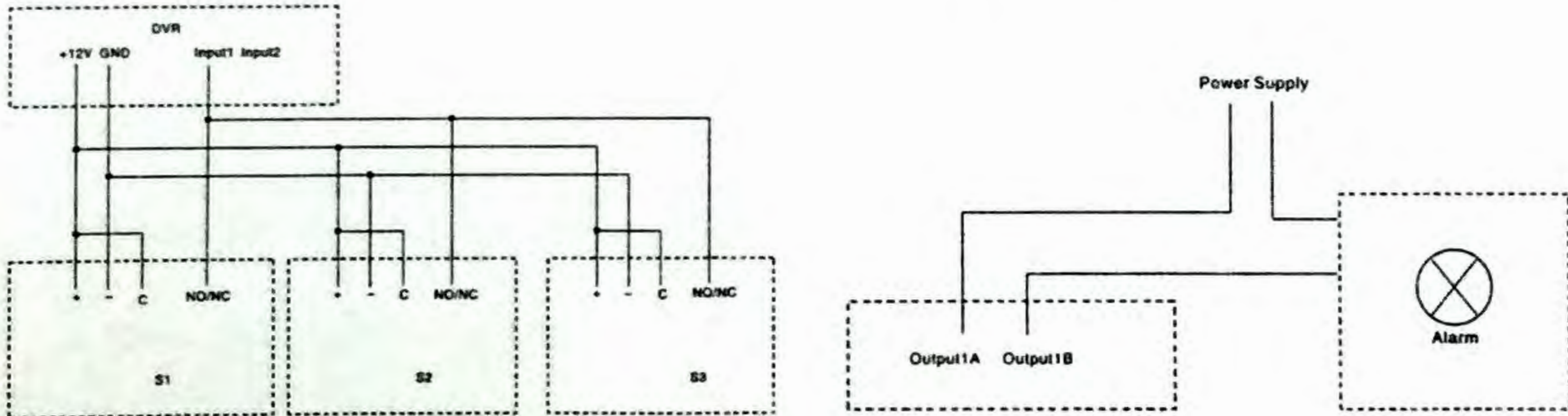
Alarm input: The physical connections of the normal on/off mode are the same. And user can select normal on/off mode in the DVR. Typical alarm connection: The sensor power supply is provided by DVR. The fig is as follows:

If the distance between the sensor and DVR is too far, the sensor requires a separate power supply:



If we parallel connected the sensor, the DVR can not recognize the triggered sensor.

Alarm output connection: The alarm output side is normal-off and do not have voltage output. The other alarm equipments need the individual power supply.



Normally, Alarm's power usually is much bigger, preferably supply power separately, and do not use the DVR's power to supply. Each series alarm output critical parameters are as follows: 240V/AC7A, 125V/AC10A, 28V/DC10A, Exceeding these parameters will damage the motherboard.